



# 2023-24 Show Makeup

By: Char Palisoc

# The Makeup Book





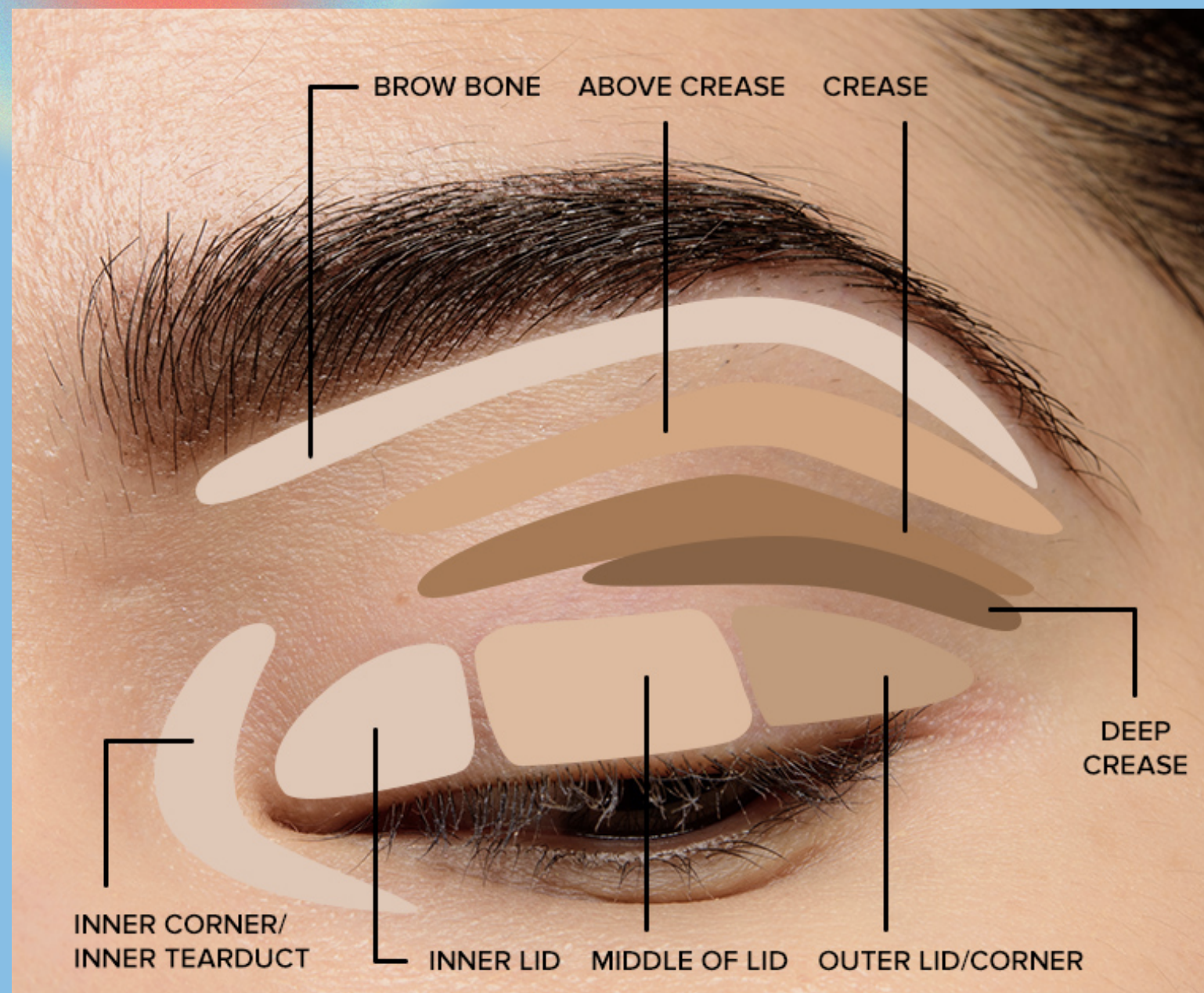
**Please review this slide  
before continuing!**



**Makeup Basics**



# Eye Anatomy



I will be using the terms here, so please familiarize yourself with these terms!

---



# Materials

Essence 'Ice Ice Baby'  
Eyeshadow Palette



ELF Glitter Eyeshadow,  
Ocean Eyes



Colourpop Jelly Much  
Eyeshadow, So Cool



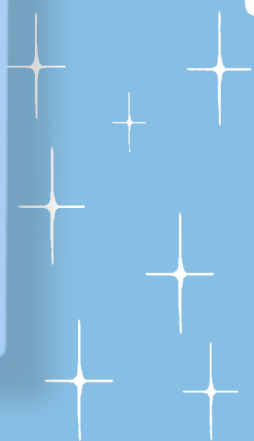
+ Several different sized eyeshadow brushes  
(Please do not use one brush!!)





# Essence 'Ice Ice Baby' Palette

This palette is what we will mainly be using! (Just sneaking one shade from the Jaclyn Hill palette) I will refer to the eyeshadow using these numbers, but I'll also supply a picture on each slide.





# Step 1 (Prep)



Apply a layer of eye (or face) primer around eye area. Then, follow with a thin layer of concealer. Evenly distribute with a beauty blender/brush.





# Step 2

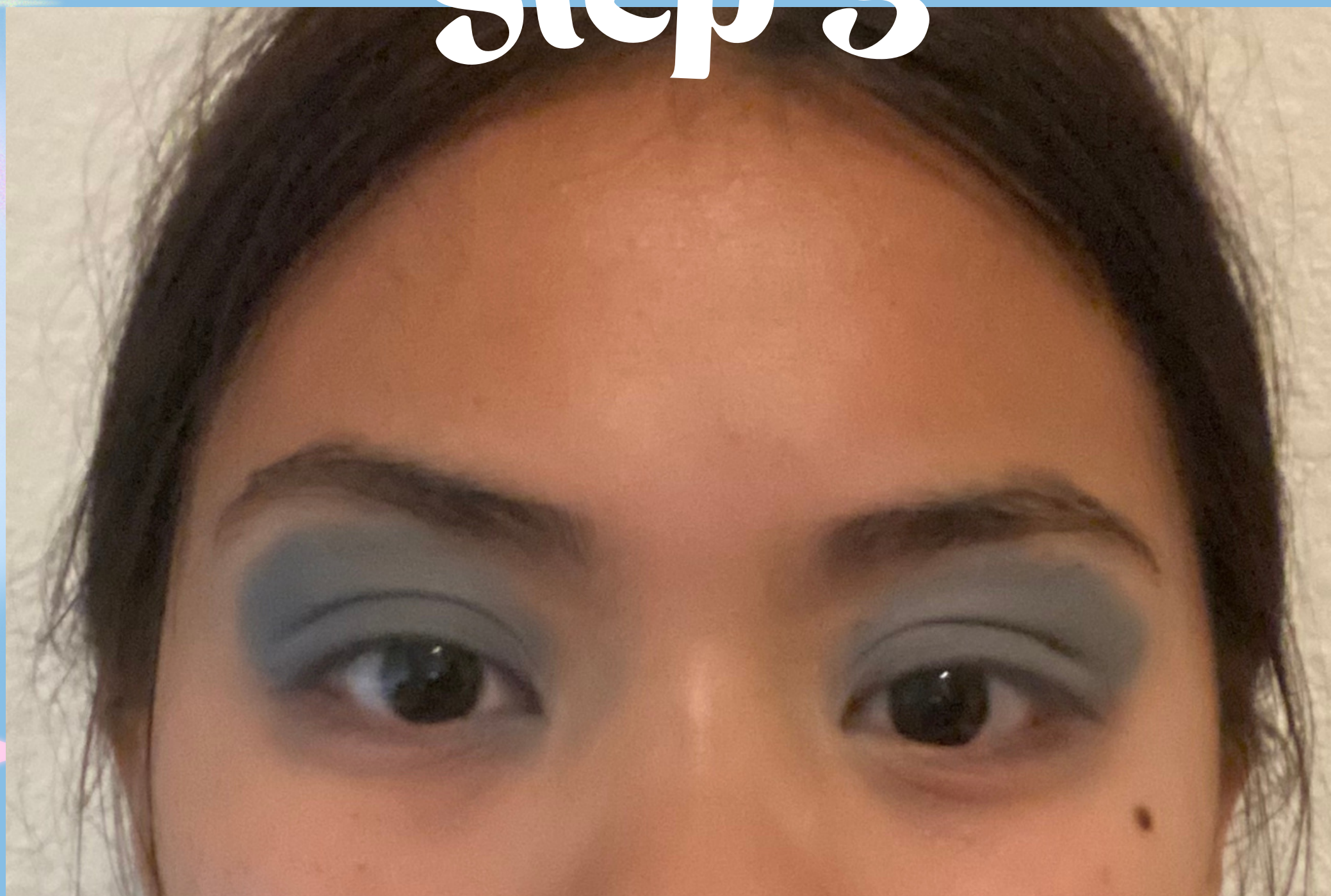


Apply #3 using a fluffy brush around lid and into crease. This will serve as a base color, so it doesn't have to be too pigmented, but try your best.





# Step 3



Repeat step 2, but using color #1.





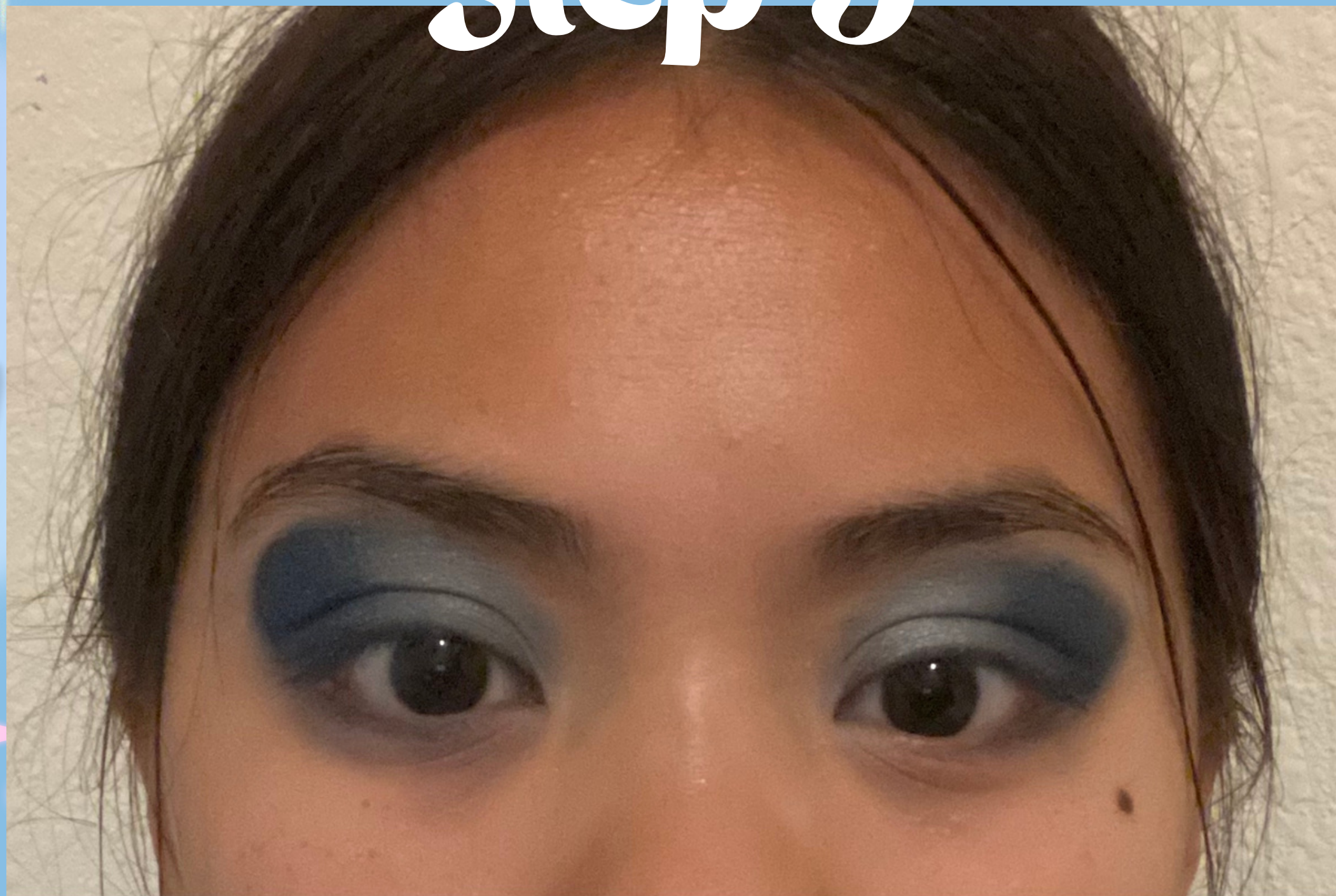
# Step 4



Using a fluffy brush, concentrate #6 around the outer V of your crease. Focus on blending this so it does not look harsh, but rather a seamless transition.



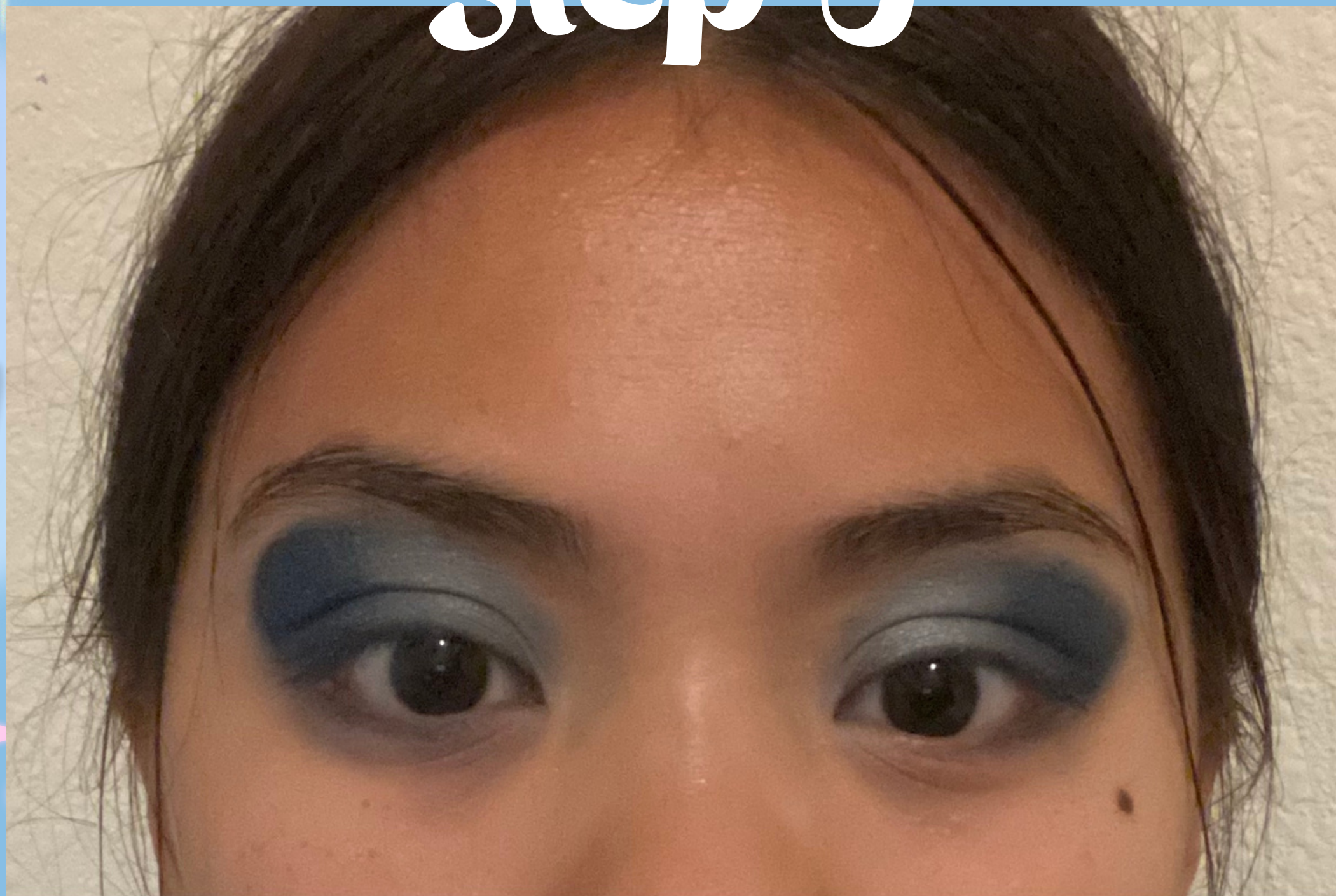
# Step 5



Using the ELF Liquid Eyeshadow, apply in small sections in outer V in crease and quickly blend with a dense eyeshadow brush. Please do your best to make this blend seamlessly! Use the shade #6 along the center to make this blend look less harsh.



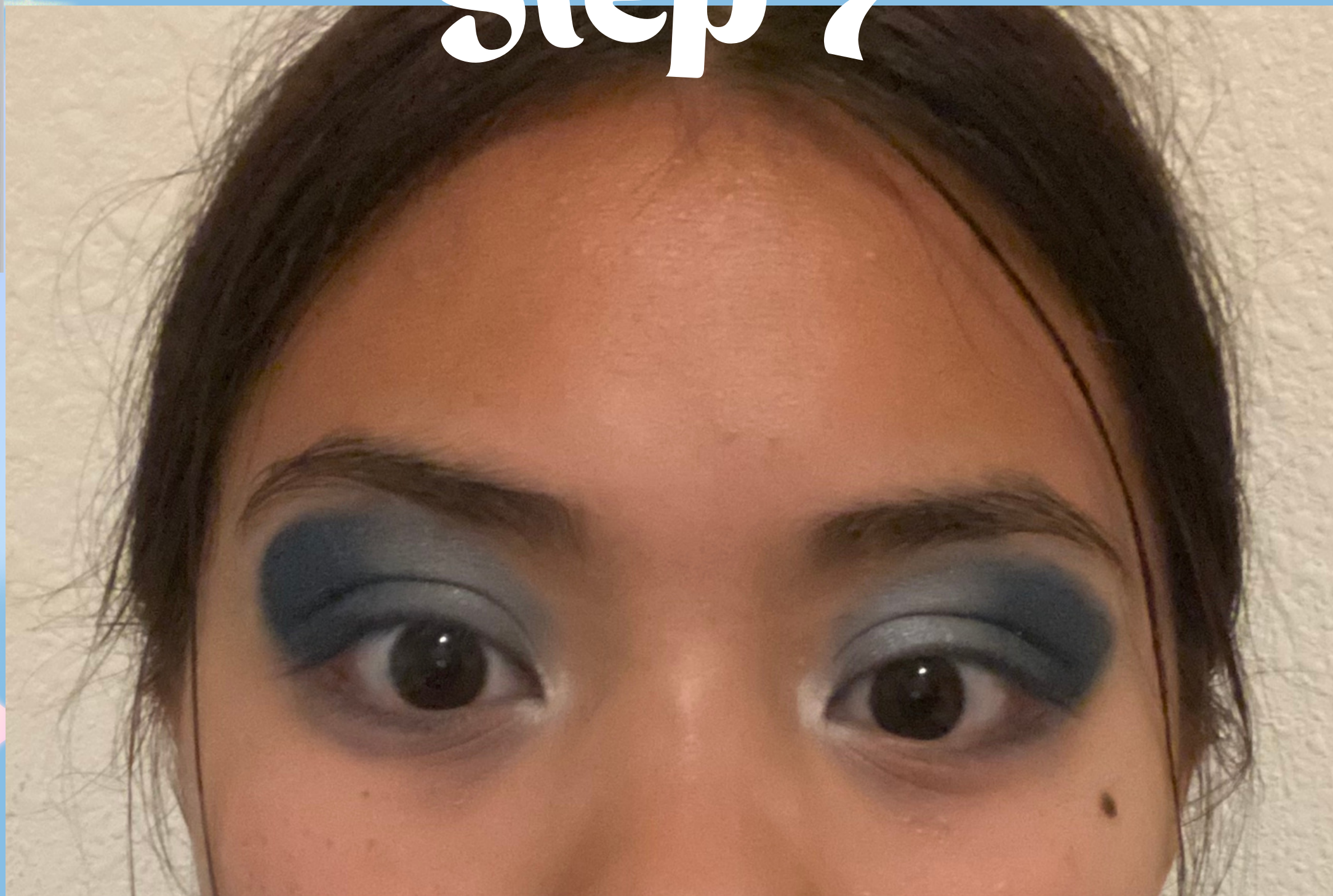
# Step 6



Then, apply #5 on the inner lid of your eye.



# Step 7



Use the highlighted shade, Beam,  
(or any sparkly white eyeshadow) in your inner corner.



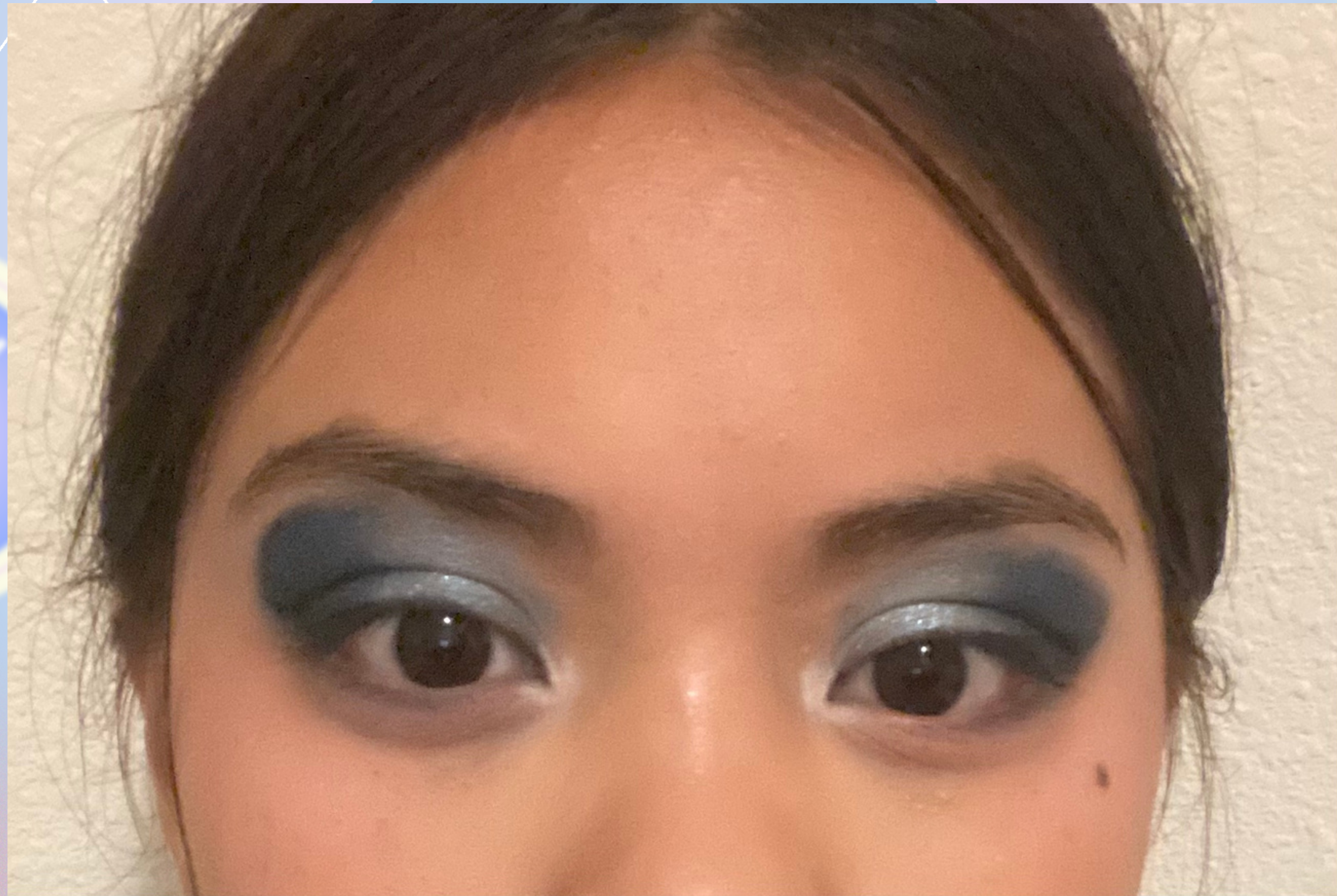
# Step 8



Apply the Colourpop Gel Eyeshadow along the inner inner lid where you previously applied the silver eyeshadow.



# Completed Look!



Final steps include drawing eyeliner and applying fake eyelashes (not shown here), and you're done!





# And you're done!

It is typically personal preference whether to do your base makeup or eyeshadow first, but I personally prefer doing my eyeshadow first so I don't get any eyeshadow fallout on my face makeup. After this, continue to do your base  
face makeup and you're all set!



# Final Touch



We will also be using the Colourpop Gel Eyeshadow as highlighter. Do this step AFTER you finish your base makeup.