

The background of the image is a black surface covered with numerous small, bright red confetti pieces, creating a festive and celebratory atmosphere.

Parade Make up

Make up Tools

- Brushes
- Sponges
- Eyelash Curler
- Eyelash Glue
- Make Up Removing Wipes



Make up Tools

- Primer
- Foundation (liquid)
- Concealer
- Contour
- Bronzer
- Blush
- Eyebrow gel or Pencil
- Highlighter
- Eyeliner
- Mascaras
- Setting Spray
- Fake Eyelashes
- Finishing Powder

Primer



Makeup primer is a base for foundation or face makeup that allows it to go on smoother and last longer. Formulas are available in cream, gel and powder.

Foundation



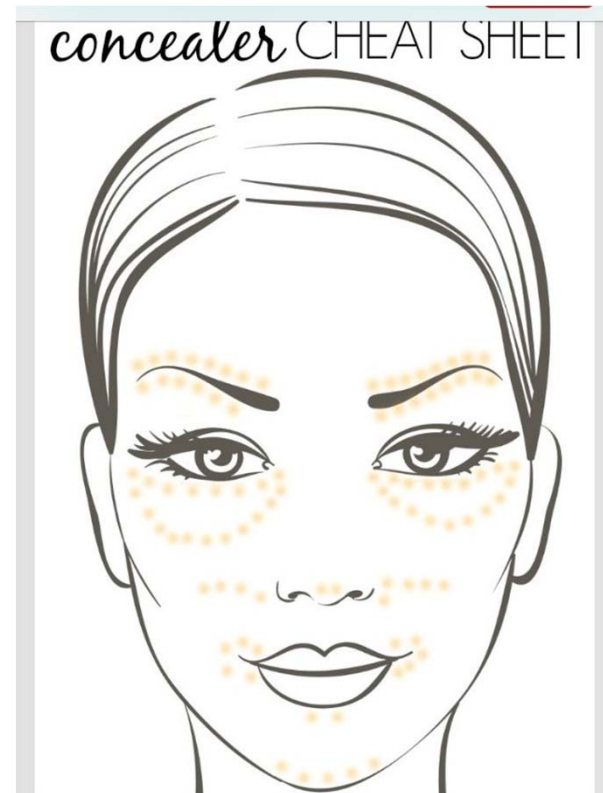
Foundation is a color makeup applied to the face to create an even, uniform color to the complexion

Make sure it's close to your skin tone

Concealer

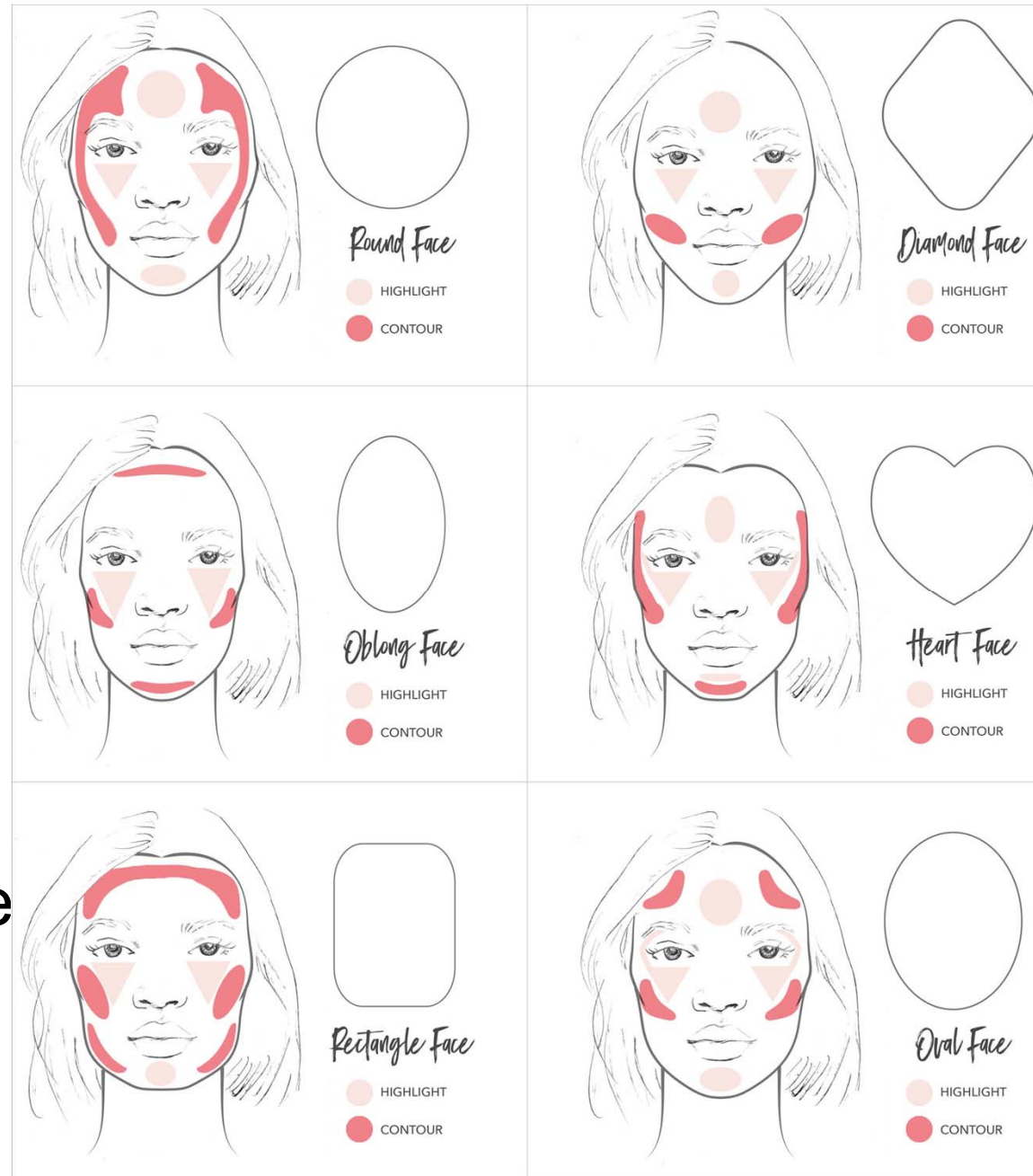


A concealer or color corrector is a type of cosmetic that is used to mask dark circles, age spots, large pores, and other small blemishes visible on the skin. It is similar to foundation, but thicker and used to hide different pigments by blending the imperfection into the surrounding skin tone.



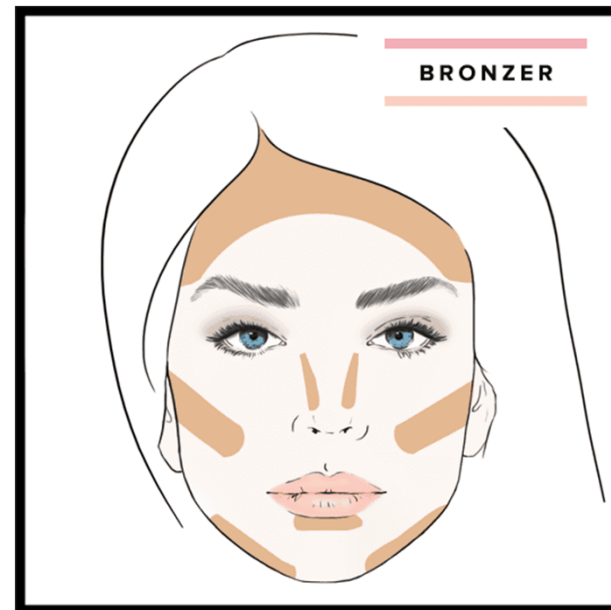
Contouring

Choose a Foundation that is a few shades darker than your skin tone and apply to hollows of your cheeks, temples, hairline, jawline or nose



Bronzer

Select a bronzer 1 or 2 shades darker than your natural skin tone. Since the purpose of a bronzer is to darken the complexion subtly, the one you choose will depend on the color of your skin.



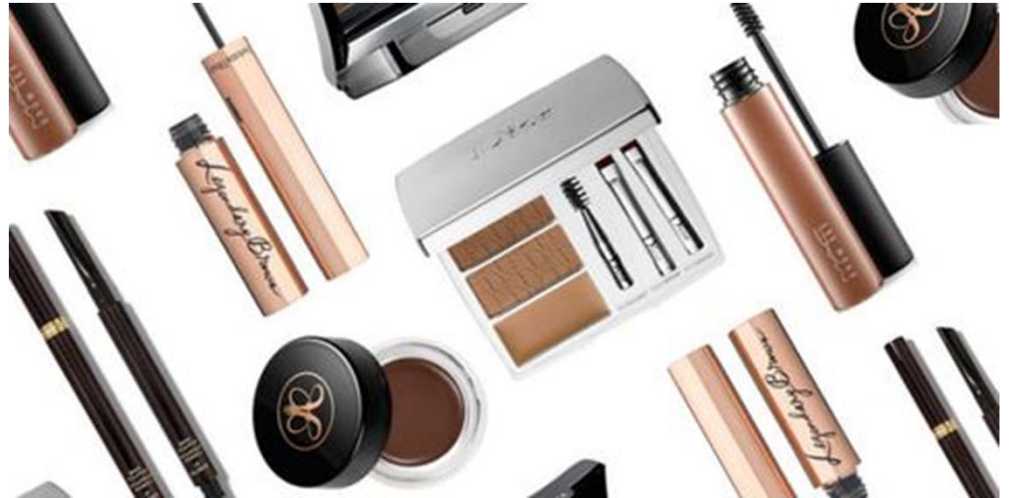
Blush

For coloring the cheeks
in varying shades.



BLUSH

Eyebrows



Just like you use hairspray to set your hair, eyebrow gel is used to secure your brows in place.

Brush eyebrows before applying

Use a Shade that compliments your hair!!!!

EYEBROWS TUTORIAL

https://www.youtube.com/watch?v=Wj3p0bo_2w0

Eyeliner

To define larger,
rounded eyes

EYELINER TUTORIAL

[https://www.youtube.com/
watch?v=l55V-PAxkIE](https://www.youtube.com/watch?v=l55V-PAxkIE)



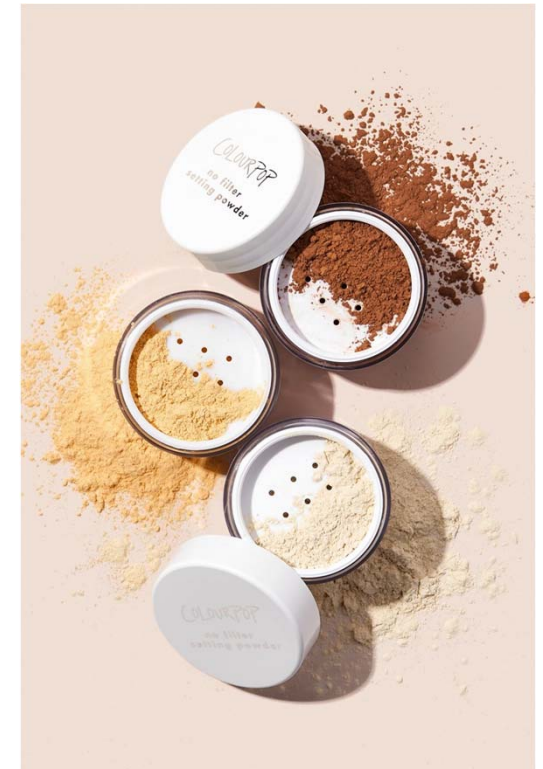
[illegible]

SD-01	SD-02	SD-03
SD-05	SD-07	SD-08
SD-09	SD-11	SD-12
SD-16	SD-17	SD-66
SD-67	SD-68	SD-69
SD-70		

<https://www.youtube.com/watch?v=OcTw2b0Ho-8>

Finishing Spray and Setting Powder

- Finishing Spray: The whole purpose of using a makeup setting spray is to help prevent your makeup (foundation, lipstick, eye shadow, and more) from smudging, creasing, or fading quickly.
- Setting Powder: It's what we think of as classic powder. It goes on after your foundation to get rid of shine and "set" it so that it lasts a long time. It can be tinted to match your skin or translucent.



Jaclyn Hill Palette

[https://www.morphe.com
/products/jh2-jaclyn-hill-
ii-palette](https://www.morphe.com/products/jh2-jaclyn-hill-ii-palette)

Price: \$38



Shade Colors

Using:

- A. Pooter
- B. Chip
- C. Buns
- D. Beam



Step 1

Use shade Pooter inside
crease



Step 2

Use shade Chip on inner corner and outer corner of the eyelid.



Step 3

Blend inner corner and outer corner up into orbital eye bone. Use shade Buns.



Step 4

Apply shade Beam into the center of eyelid.



Step 5

Blend in shade Pooter into shade Beam.



Step 6



**BLEND!! BLEND!!
BLEND!!**

Step 7

Bring down shade Buns and Chip into bottom eyelid.

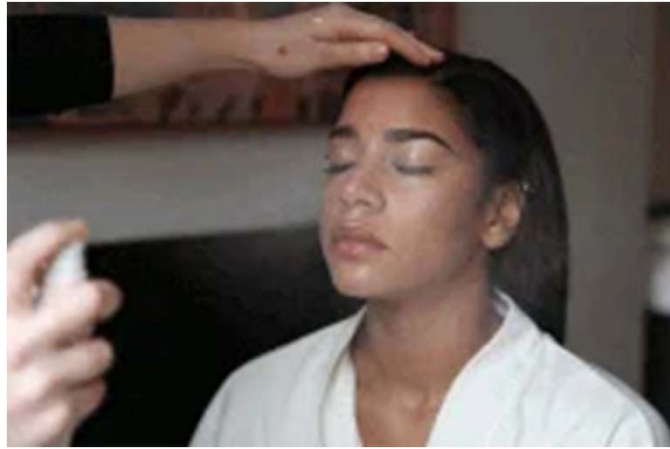
Beam will be place on inner corner.



Step 8

- 1) Draw on eyeliner before fake lashes.
- 2) Put on Fake Lashes
- 3) Touch up the eyeliner





Last but not least,
Finishing Spray!